

HONGKONG MACAU

Starting From :Rs.:30500 Per Person

4 Days / 3 Nights

HONGKONG & MACAU

.....

HONGKONG MACAU

MMMM

.....

Package Description

Itinerary

Day.1

ARRIVAL HONGKONG

PICK UP FROM AIRPORT TO HOTEL

Meals:N.A

Day.2

CITY TOURS

CITY TOUR VISIT AVENUE OF STAR, JEWELLERY WORKSHOP, SOUVENIR SHOP AND VICTORIA PEAK (TOP LEVAL) BY BUS IN THE MORING ONLY AND TOURS END AT TSIM SHA TSUI AREA, PASSENGER RETURN BACK TO HOTEL ON THEIR OWN ARRANGEMENT/EXPENSES

Meals:BREAKFAST

Day.3

VISIT TO MACAU

VISIT TO RUINS OF ST. PAULS, FISHEMAN'S WHARF, A-MA TEMPLE, CAKE SHOP, MACAU TOWER (OBSERVATION DECK TICKET NOT INCLUDED) ADN CASINO.

Meals:LUNCH

Day.4

DEPARTURE TO AIRPORT

AFTER BREAKFAST DEPOT TO AIRPORT WITH SWEET MEMORIES OF HONGKONG AND MACAU

Meals:BREAKFAST

.....

Inclusions

- *HOTEL ACCOMMODATION.
- *DAILY BREAKFAST AT HOTEL.
- *ALL TRANSFER ON SIC .
- *FERRY TICKET TO MACAU AND BACK TO HONGKONG AIRPORT.
- *HALF DAY CITY TOUR - MORNING TOUR ONLY.

*MACAU CITY TOUR WITH LOCAL LUNCH.

.....

Exclusions

*WHICH IS NOT SPECIFIED IN ITINERARY.

.....

Hotel Details & Price

Hotel Name	Star	Twin Sharing	Child With Bed	Child Without Bed
ROYAL VIEW/TAIPA SQUARE	4	Rs.30,500	Rs.20,625	Rs.12,950
HARBOUR GRAND KOWLOON HOTEL	5	Rs.39,000	Rs.25,950	Rs.15,125

.....

Highlights

*HONGKONG WITH MACAU.

.....

Sightseeing

HOLIDAY IN HONGKONG MACAU

HOLIDAY IN HONGKONG MACAU



JEWELLERY WORKSHOP

JEWELLERY WORKSHOP



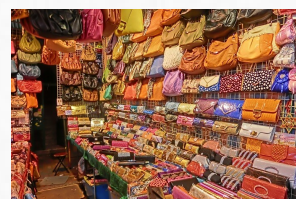
VICTORIA PEAK (TOP LEVAL) BY BUS IN THE MORING ONLY

VICTORIA PEAK (TOP LEVAL) BY BUS IN THE MORING ONLY



VISIT TO RUINS OF ST. PAULS, FISHEMAN'S WHARF, A-MA TEMPLE, CAKE SHOP, MACAU TOWER (OBSERVATION DECK TICKET NOT INCLUDED) ADN CASINO. [-]

VISIT TO RUINS OF ST. PAULS, FISHEMAN'S WHARF, A-MA TEMPLE, CAKE SHOP, MACAU TOWER (OBSERVATION DECK TICKET NOT INCLUDED) ADN CASINO. [-]



Terms & Conditions

.....

*FREE arrival SIC transfer (with one luggage transport) from below pick-up point :- a. From HONG KONG AIRPORT (Between 07:00hrs - 22:00hrs & every 60min. Per shuttle) OR b. From DISNEY HOTEL (2 pick up time : 13:30hrs or 1hour after firework) OR c. From HONG KONG SIDE FERRY PIER (Between 11:00hrs - 17:00hrs & every 60min. Per shuttle) FREE departure SIC transfer (with one luggage transport) to below drop-off point :- a. To HONG KONG AIRPORT (Between 07:00hrs - 22:00hrs & every 60min. Per shuttle) OR b. To DISNEY HOTEL (only morning pick-up) OR c. To FERRY PIER (only morning pick-up) FREE SIC Hong Kong City Pier transfer (with one luggage transport) from below pick-up point :- a. From HONG KONG AIRPORT (Between 07:00hrs - 22:00hrs & every 60min. Per shuttle) OR b. From DISNEY HOTEL (2 pick up time : Morning & 13:30hrs) OR c. From CITY HOTEL (2 pick up time : Morning only) Shuttle transfer will be provided by Macau's Hotel, passenger need to proceed to Hotel's shuttle bus stop on their own - Shuttle transfer service timing : 10:00hrs - 17:00hrs only. If pax's return ferry before 09:30hrs or after 17:00hrs, they have to arrange their own transfer at their own expense Once booking RECONFIRMED / GUARANTEED, all services will be arranged and prepaid. Any CANCELLATION or NO-SHOW will be charged in full amount as per the whole package 2. As per Shenzhen Provincial Tourism Bureau, all Shenzhen hotels will not provide daily amenities (eg: Toothbrushes / Slippers / Combs etc) 3. All transfer and tour services will be suspended on TYPHOON / FOG AND BAD WEATHER 4. Porter service is NOT INCLUDED in the package, you can avail of & directly pay for portorage fee at USD 3 per luggage per service Terms & Conditions 1. NO SEAT-IN-COACH TRANSFER SERVICE BETWEEN 22:30 HRS - 07:00HRS :
- Passenger's arriving before 07:00hrs, please wait at .